



**Series 135**

# Motogard

**Installation Instructions**

---

## CONNECTIONS

### **Power Connections:**

Connect 120/240 VAC to input terminals 1 and 2.

### **Sensor Connections:**

1. Connect one lead of each thermistor to Terminals 6, 7, and 8, respectively.
2. Connect other lead of each Thermistors to common terminal 9.
3. Maximum number of Thermistors in **parallel**: Three (3)
4. Connect a 150 ohm, ½ watt resistor from any unused input terminal to sensor common.

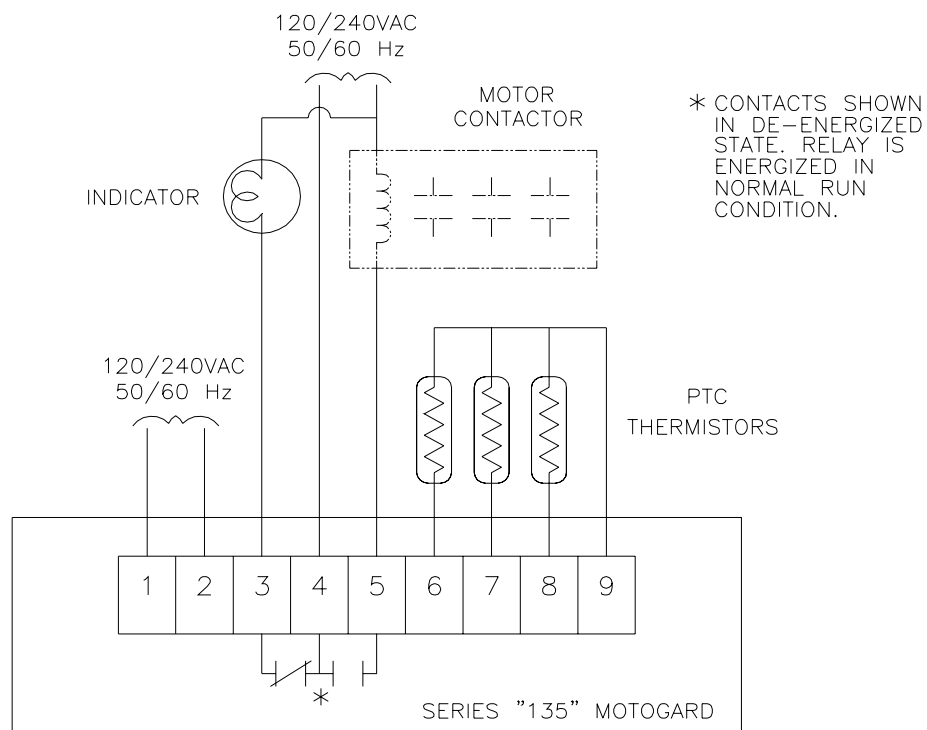
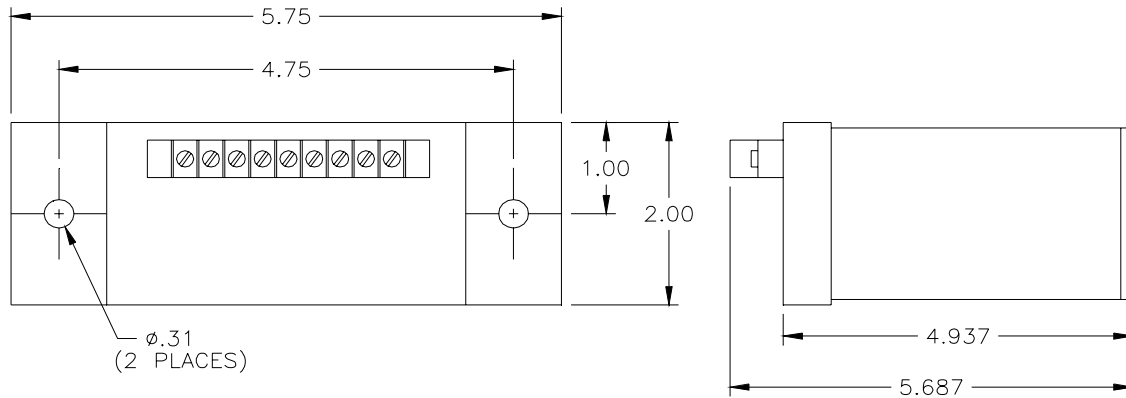
### **Output Load Connections:**

1. Terminals 3, 4 and 5 comprise a set of “form C” contacts with terminal 4 common. Terminal 5 is the open side. Terminal 3 is the closed side.
2. Be sure power is never applied directly across contacts but always in series with a load.
3. Maximum allowable load - **5 amps at 115 VAC**
4. The closed output of the Motogard Over Temperature Protection System has been specifically designed to operate directly in series with most main line contactors. If a small interposing relay must be used, the sealed burden should be greater than 10VA.
5. The open output of the Series “135” controller can be used for trip indication.

See opposite side for possible wiring option.

# Series "135" Motogard

Three (3) Thermistors in parallel



1080 N. Crooks Road • Clawson, MI 48017  
800-635-0289 • 248-435-0700 • Fax 248-435-8120  
www.ametekapt.com • www.ametek.com

930  
135.I1R  
07/02.Z91  
1C